

# Kirtland Air Force Base Information About Drones/Unmanned Aircraft Systems (UAS)

Feb. 20, 2019

Kirtland Air Force Base wants to ensure flying safety remains paramount in the airspace around the installation and surrounding area. We are asking all Drone/UAS operators to become knowledgeable and practice safe general operating rules required to fly a Drone/UAS in the National Airspace System.

If you have never flown an aircraft or a Drone/UAS, or it has been a while since you have flown, we encourage you to visit the Federal Aviation Administration (FAA) UAS Website “Getting Started” at [https://www.faa.gov/uas/getting\\_started](https://www.faa.gov/uas/getting_started) for the latest rules and insights governing Drone/UAS operations.

## Prohibited Flight over Military Installations

**All UAS flight operations, including Public, Civil, and Model Aircraft, are prohibited within the airspace over select national security sensitive facilities (including Kirtland), surface to 400 feet above the ground in accordance with UAS NOTAM FDC 7/7282.**

**Visit <http://uas-faa.opendata.arcgis.com> for more information and to see an interactive map of all locations specified in the NOTAM.**

## Recreational Users – “Fly for fun”

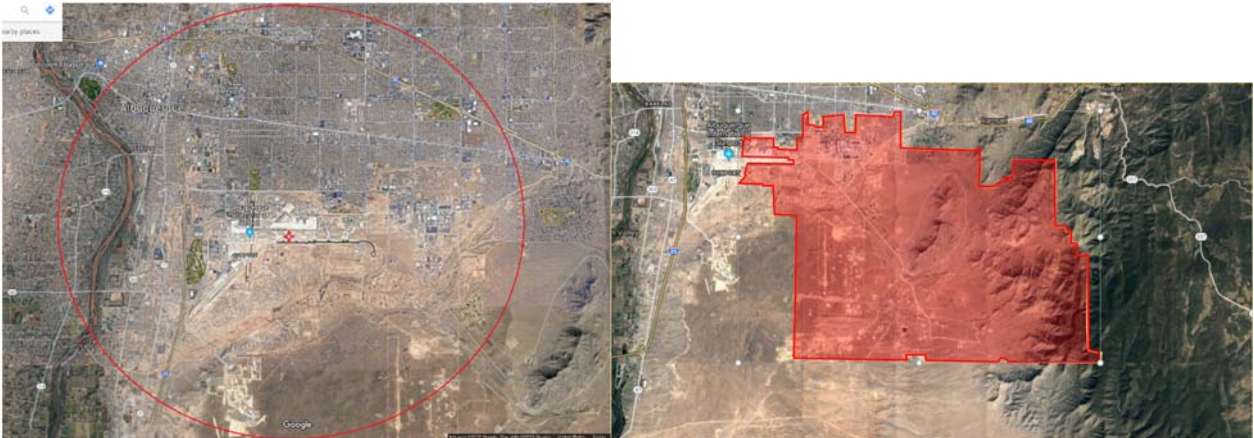
The FAA requires all recreational UAS operators to contact the airport operator and Air Traffic Control Tower prior to operating their UAS weighing more than 0.55 pounds within five statute miles of an airport. Names for UASs may include, but are not limited to, model aircraft, “drones,” and quadcopters, etc.

**Recreational sUAS flights over Kirtland Air Force Base (Including Maxwell Housing) is prohibited.**

To contact us regarding official use within five miles of Kirtland, or if you simply have questions about Drone/UAS rules, please e-mail us at [Kirtland.Drone.UAS.Request@us.af.mil](mailto:Kirtland.Drone.UAS.Request@us.af.mil)

The FAA offers a free mobile application called “B4UFLY” that will show your current location and a circle around each airport that helps you determine if you should notify those airports. Maps showing five miles around Kirtland are included on the next page.

Don’t forget to check on other smaller nearby airports as well!



*5 mile radius around Albuquerque Sunport*

*Kirtland Restricted Airspace*

## **Commercial Users – “Fly for work”**

Commercial operators wanting to fly within the confines of Kirtland airspace should request a Certificate of Authorization (COA) from the FAA. That request will be evaluated by the Kirtland Range Management office and should satisfy all requirements to contact Kirtland.

To request a waiver, visit [https://www.faa.gov/uas/request\\_waiver](https://www.faa.gov/uas/request_waiver)

## **Contact Us**

If you have questions or concerns about Drone/UAS activity near Kirtland, or if you would like to let us know about your own operations, please contact us at [Kirtland.Drone.UAS.Request@us.af.mil](mailto:Kirtland.Drone.UAS.Request@us.af.mil)

Thank you for helping us keep the skies safe!